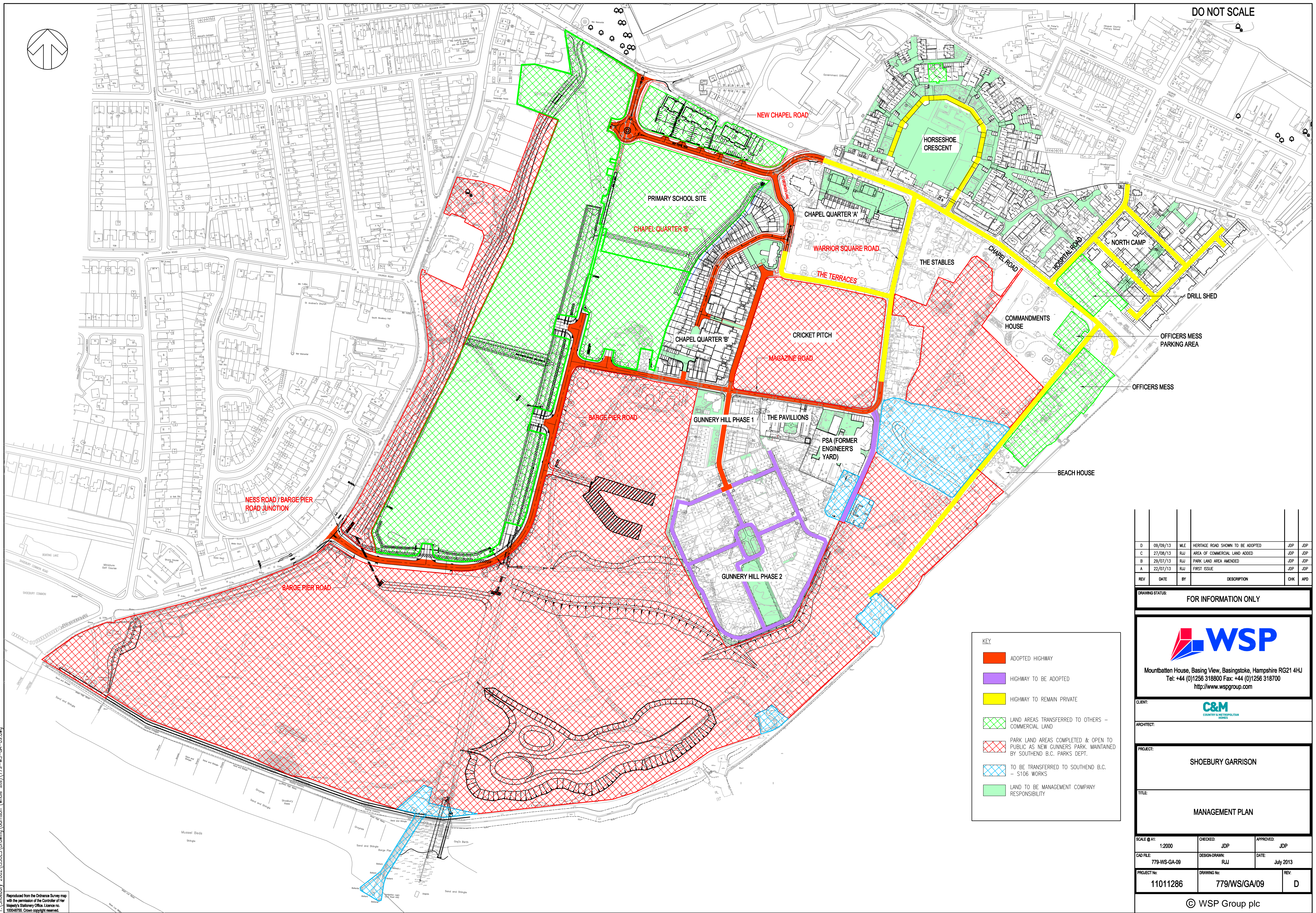


DO NOT SCALE



KEY

- ADOPTED HIGHWAY
- HIGHWAY TO BE ADOPTED
- HIGHWAY TO REMAIN PRIVATE
- LAND AREAS TRANSFERRED TO OTHERS - COMMERCIAL LAND
- PARK LAND AREAS COMPLETED & OPEN TO PUBLIC AS NEW GUNNERS PARK, MAINTAINED BY SOUTHEM B.C. PARKS DEPT.
- TO BE TRANSFERRED TO SOUTHEM B.C. - S106 WORKS
- LAND TO BE MANAGEMENT COMPANY RESPONSIBILITY

REV	DATE	BY	DESCRIPTION	CHK	APP
D	09/09/13	MLE	HERITAGE ROAD SHOWN TO BE ADOPTED	JDP	JDP
C	27/08/13	RJL	AREA OF COMMERCIAL LAND ADDED	JDP	JDP
B	29/07/13	RJL	PARK LAND AREA AMENDED	JDP	JDP
A	22/07/13	RJL	FIRST ISSUE	JDP	JDP

DRAWING STATUS: FOR INFORMATION ONLY



WSP
 Mountbatten House, Basing View, Basingstoke, Hampshire RG21 4HJ
 Tel: +44 (0)1256 318800 Fax: +44 (0)1256 318700
 http://www.wspgroup.com

CLIENT: C&M COUNTRY & METROPOLITAN SERVICES

ARCHITECT:

PROJECT: SHOEBURY GARRISON

TITLE: MANAGEMENT PLAN

SCALE @ A1: 1:2000	CHECKED: JDP	APPROVED: JDP
--------------------	--------------	---------------

CAD FILE: 779-WS-GA-09	DESIGN-DRAWN: RJL	DATE: July 2013
------------------------	-------------------	-----------------

PROJECT No: 11011286	DRAWING No: 779/WS/GA/09	REV: D
----------------------	--------------------------	--------

© WSP Group plc

Y:\Shoebury 2002\ISSUES\Drawing\Garrison (whole site)\779-WS-GA-09.dwg

Reproduced from the Ordnance Survey map with the permission of the Controller of Her Majesty's Stationery Office. Licence no. 100048755. Crown copyright reserved.